

## Windows 10 Joining an Active Directory Domain

This presentation shows Windows 10 joining an Active Directory Domain. This presentation shows joining the domain mait.example.org.

Preuss  
11/4/2015



The presentation starts and logs on to Windows 10.



```

C:\Users\Student>ipconfig

Windows IP Configuration

Ethernet adapter Ethernet0:

    Connection-specific DNS Suffix  . : mait.example.org
    IPv6 Address. . . . .           : 2001:470:1f11:455:c8d0:3341:a14d:ee9d
    IPv6 Address. . . . .           : 2001:470:1f11:455:f45d:d7f5:d30:3b62
    Temporary IPv6 Address. . . . . : 2001:470:1f11:455:39d4:5ff8:e6d0:a455
    Link-local IPv6 Address . . . . . : fe80::f45d:d7f5:d30:3b62%4
    IPv4 Address. . . . .           : 192.168.66.187
    Subnet Mask . . . . .           : 255.255.252.0
    Default Gateway . . . . .       : fe80::211:43ff:fee7:f195%4
                                      192.168.64.1

Tunnel adapter isatap.mait.example.org:

    Media State . . . . .           : Media disconnected
    Connection-specific DNS Suffix  . : mait.example.org

Tunnel adapter Teredo Tunneling Pseudo-Interface:

    Media State . . . . .           : Media disconnected
    Connection-specific DNS Suffix  . :

C:\Users\Student>

```

The presentation insures the Windows 10 system is connected to the same network as the Active Directory domain.

The presentation does set the NIC of the virtual machine to bridge mode. In bridge mode, the presentation forces bridge mode to one interface.



Recycle Bin



Student

Life at a glance

Most used

- Get Started
- Get Skype
- Maps
- People
- Calculator
- Alarms & Clock

Microsoft Edge

Weather

LEGO MINDSTORM...	LibreOffice Writer	Graphical ROBOTC for...
ROBOTC for LEGO...	VLC media player	LDFind 1.3.5.3
LDGlite 1.2.5	LDView 4.1	

- File Explorer
- Settings
- Power
- All apps

The presentation selects "Settings" from the main Windows 10 menu.



Settings

SETTINGS

Find a setting

System  
Display, notifications, apps, power

Accounts  
Your account, sync settings, work, other users

Update & security

Work & Internet  
airplane mode, VPN

Personalization  
Background, lock screen, colors

Ease of Access  
Narrator, magnifier, high contrast

Privacy  
Location, camera

Speech, region, date

After opening the settings, the presentation selects "System".

Recycle Bin

LEGO MINDSTOR...

Settings

SYSTEM

Find a setting

- Display
- Notifications & actions
- Apps & features
- Multitasking
- Tablet mode
- Power & sleep
- Storage
- Offline maps
- Default apps
- About

PC

PC name: DESKTOP-NAJLE64

Rename PC

Organization: WORK

Join a domain

Join Azure AD

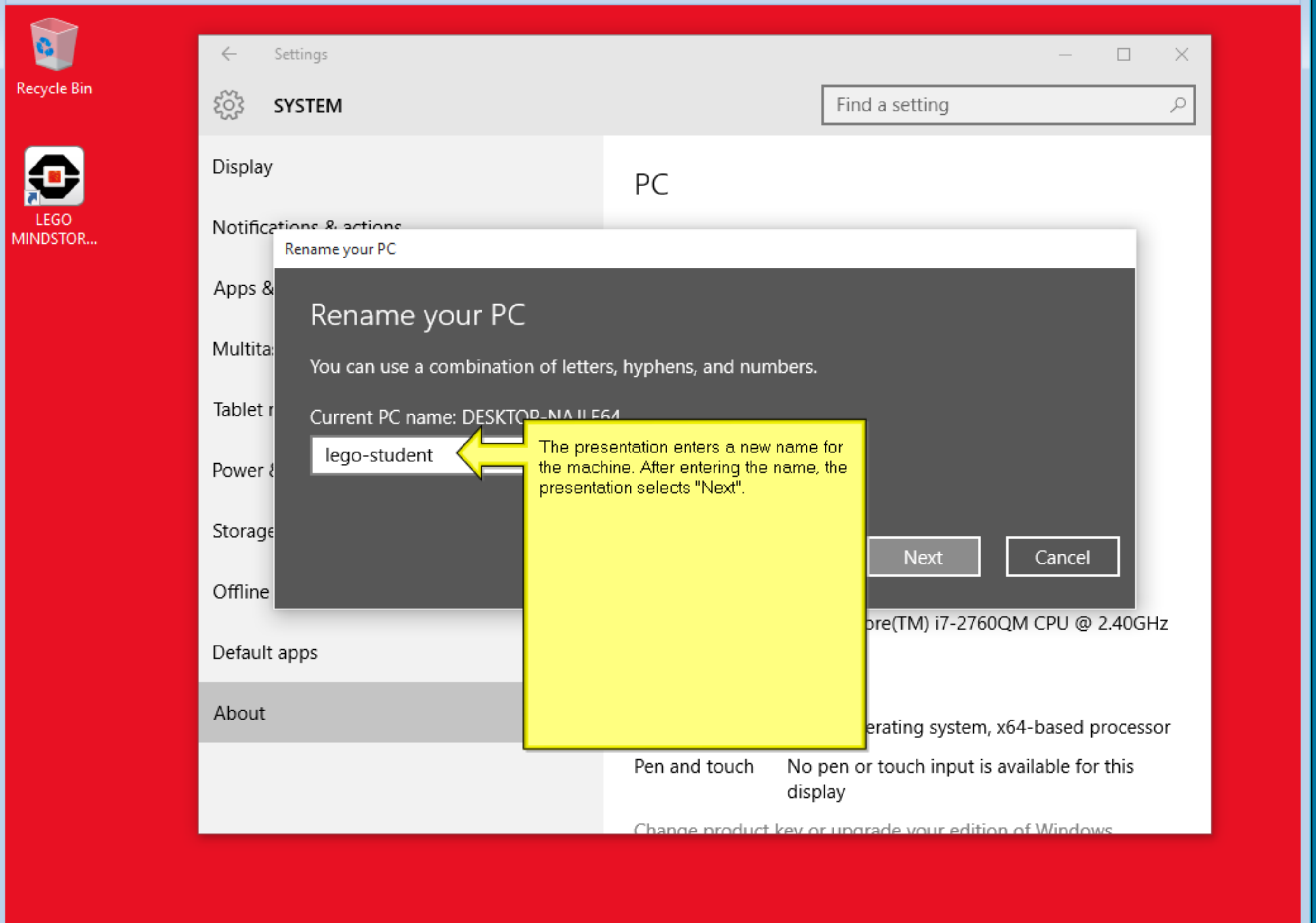
Edition: Wind

Product ID: 00331-20463-50856-AA887

Processor: Intel(R) Core(TM) i7-2760QM CPU @ 2.40GHz  
2.40 GHz

The presentation selects "Rename PC".

The presentation selects "About" under the "System" menu.



Settings

SYSTEM

Find a setting

Display PC

Notifications & actions

Apps & features

Multitasking

Tablet mode

Power & battery

Storage

Offline

Default apps

About

Core(TM) i7-2760QM CPU @ 2.40GHz

Operating system, x64-based processor

Pen and touch No pen or touch input is available for this display

Change product key or upgrade your edition of Windows

Rename your PC

Rename your PC

You can use a combination of letters, hyphens, and numbers.

Current PC name: DESKTOP-NAME64

lego-student

Next Cancel

The presentation enters a new name for the machine. After entering the name, the presentation selects "Next".





Settings

SYSTEM

Find a setting

Display PC

Notifications & actions PC name DESKTOP-NAJLE64

Apps & Features Rename your PC

Multitasking

Tablet mode

Power & battery

Storage

Offline maps

Default apps

About

0856-AA887

M) i7-2760QM CPU @ 2.40GHz

g system, x64-based processor

ch input is available for this

display

Change product key or upgrade your edition of Windows

Rename your PC

After you restart, your PC name will change to: lego-student

Restart later

The presentation selects "Restart later".  
The virtual machine will restart to join the domain.







Recycle Bin



- Student
- Life at a glance
- Most used
- Get Started
- Get Skype
- Maps
- People
- Calculator
- Alarms & Clock

Microsoft Edge

Weather

LEGO MINDSTORM...

LibreOffice Writer

Graphical ROBOTC for...

ROBOTC for LEGO...

VLC media player

LDFind 1.3.5.3

LDGlite 1.2.5

LDView 4.1

- File Explorer
- Settings
- Power
- All apps

The presentation selects "Settings" from the main Windows 10 menu.



Recycle Bin



LEGO MINDSTOR...

Settings

SETTINGS

Find a setting

System  
Display, notifications, apps, power

Work & Internet  
airplane mode, VPN

Personalization  
Background, lock screen, colors

Accounts  
Your account, sync settings, work, other users

Speech, region, date

Ease of Access  
Narrator, magnifier, high contrast

Privacy  
Location, camera

Update & security

After opening the settings, the presentation selects "System".





Settings

SYSTEM

Find a setting

- Display
- Notifications & actions
- Apps & features
- Multitasking
- Tablet mode
- Power & sleep
- Storage
- Offline maps
- Default apps
- About

PC

PC name lego-student

Rename PC

Organization WORKGROUP

Join a domain

Join Azure AD

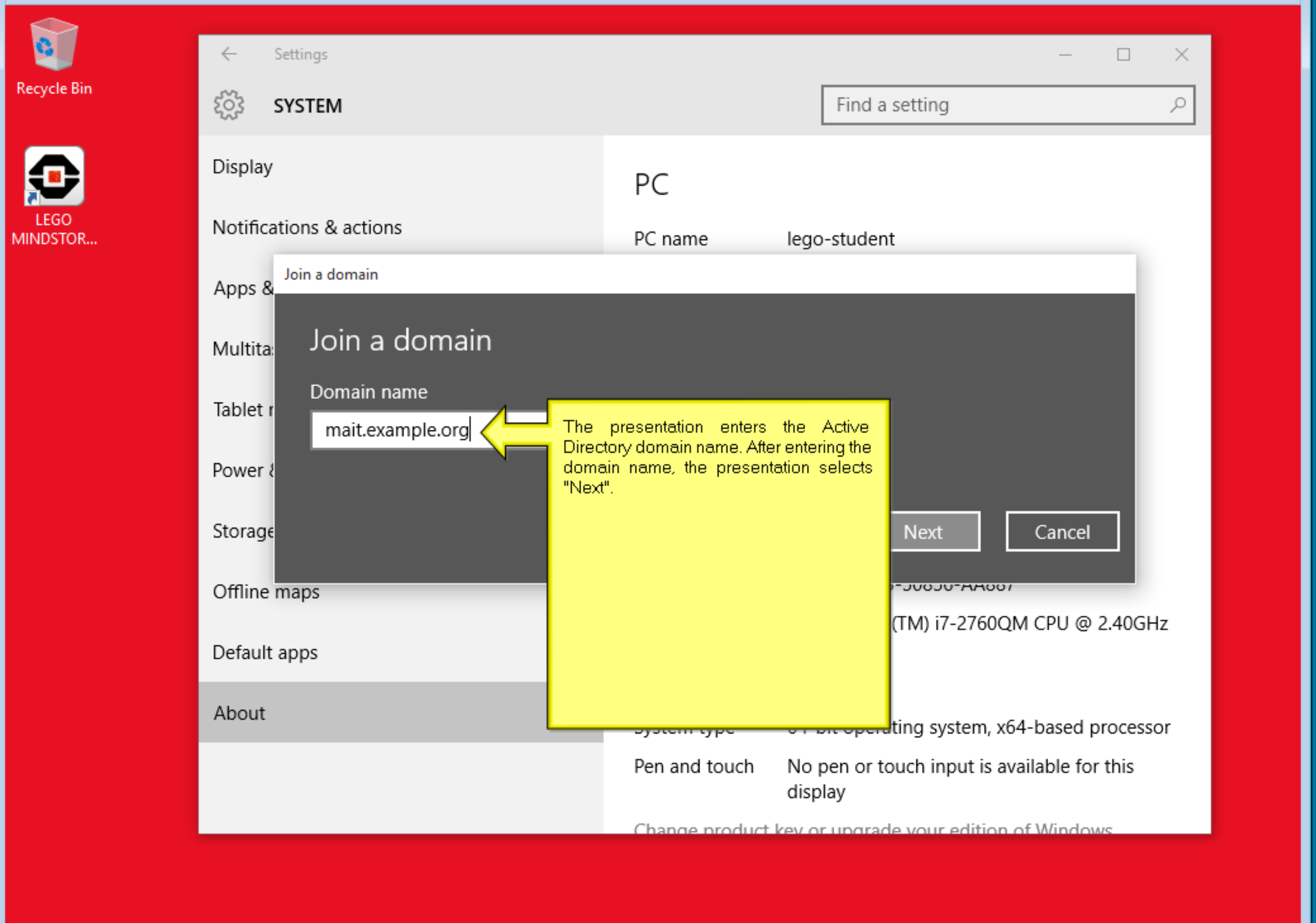
Edition Windows

Product ID 00331-2

Processor Intel(R) 2.40 GHz

The presentation selects "Join a domain".

The presentation selects "About" under the "System" menu.



Settings

SYSTEM

Find a setting

Display PC

Notifications & actions PC name lego-student

Join a domain

Join a domain

Domain name

mait.example.org

Next Cancel

(TM) i7-2760QM CPU @ 2.40GHz

System type 64-bit operating system, x64-based processor

Pen and touch No pen or touch input is available for this display

Change product key or upgrade your edition of Windows

The presentation enters the Active Directory domain name. After entering the domain name, the presentation selects "Next".



Settings

Join a domain

Join a domain

Enter your domain account info to verify you have permission to connect to the domain.

preuss@mait.example.org

.....

Domain: mait.example.org

OK Cancel

System information:

- Processor: 2.40 GHz
- Installed RAM: 2.00 GB
- System type: 64-bit operating system, x64-based processor
- Pen and touch: No pen or touch input is available for this display

Change product key or upgrade your edition of Windows

The presentation enters an administrator logon and password for your Organizational Unit (OU). The presentation selects "OK" to continue.





Settings

SYSTEM

Find a setting

Add an account

Add an account

Enter the account info for the person who'll be using this PC. If you skip this step, the person will have default permissions for the domain.

User account

preuss@mait.example.org

Account type

Next Skip

System type 64-bit operating system, x64-based processor

Pen and touch No pen or touch input is available for this display

Change product key or upgrade your edition of Windows

Read the Privacy Statement for Windows and Microsoft services

The presentation does not change anything in "User account" or "Account type". The presentation selects "Next" to continue.





Settings

SYSTEM

Find a setting

Restart your PC

Restart your PC

After you restart, your PC will be joined to this domain: mait.example.org

Restart now Restart later

The presentation selects "Restart now" to reboot the machine.

0856-AA887

M) i7-2760QM CPU @ 2.40GHz

g system, x64-based processor

h input is available for this

Change product key or upgrade your edition of Windows

Read the Privacy Statement for Windows and Microsoft services

The presentation enters a logon name and password from the Active Directory domain.

er

The presentation selects "Other user".

preuss@mait.example.org

..... [👁] [➔]

Sign in to: mait.example.org

How do I sign in to another domain?

[👤] Other user





Recycle Bin



Command Prompt

```
LEGO Microsoft Windows [Version 10.0.10240]  
MINDSTO (c) 2015 Microsoft Corporation. All rights reserved.  
  
C:\Users\preussenon>whoami  
mait\preussenon  
  
C:\Users\preussenon>_
```

The presentation verifies successful logon.